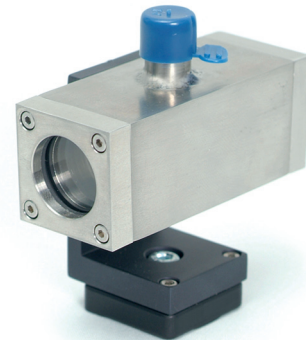


Q-MACS Reference gas cell

MINI REFERENCE GAS CELL RGC 50



technical specification

The Q-MACS Reference gas cell is a compact and robust solution for placing sealed reference gas probes in absorption spectroscopic setups. Its dimensions are similar to the lighter-sized Q-MACS Basic 1.5 QC Laser head and the Q-MACS Infrared Detector Module and can be used for laboratory and industrial applications. A large variety of molecular gases can be filled with high purity into this cell.

features		
	dimensions	25 mm x 25 mm x 63 mm
	weight	156 g
	absorption length	50 mm
	beam diameter	17 mm
	window material	KBr, BaF2
	gas volume	15.2 cm ³
	leakage	10 ⁻¹⁰ mbar l/s